

ISSUE 4

FEBRUARY 2022

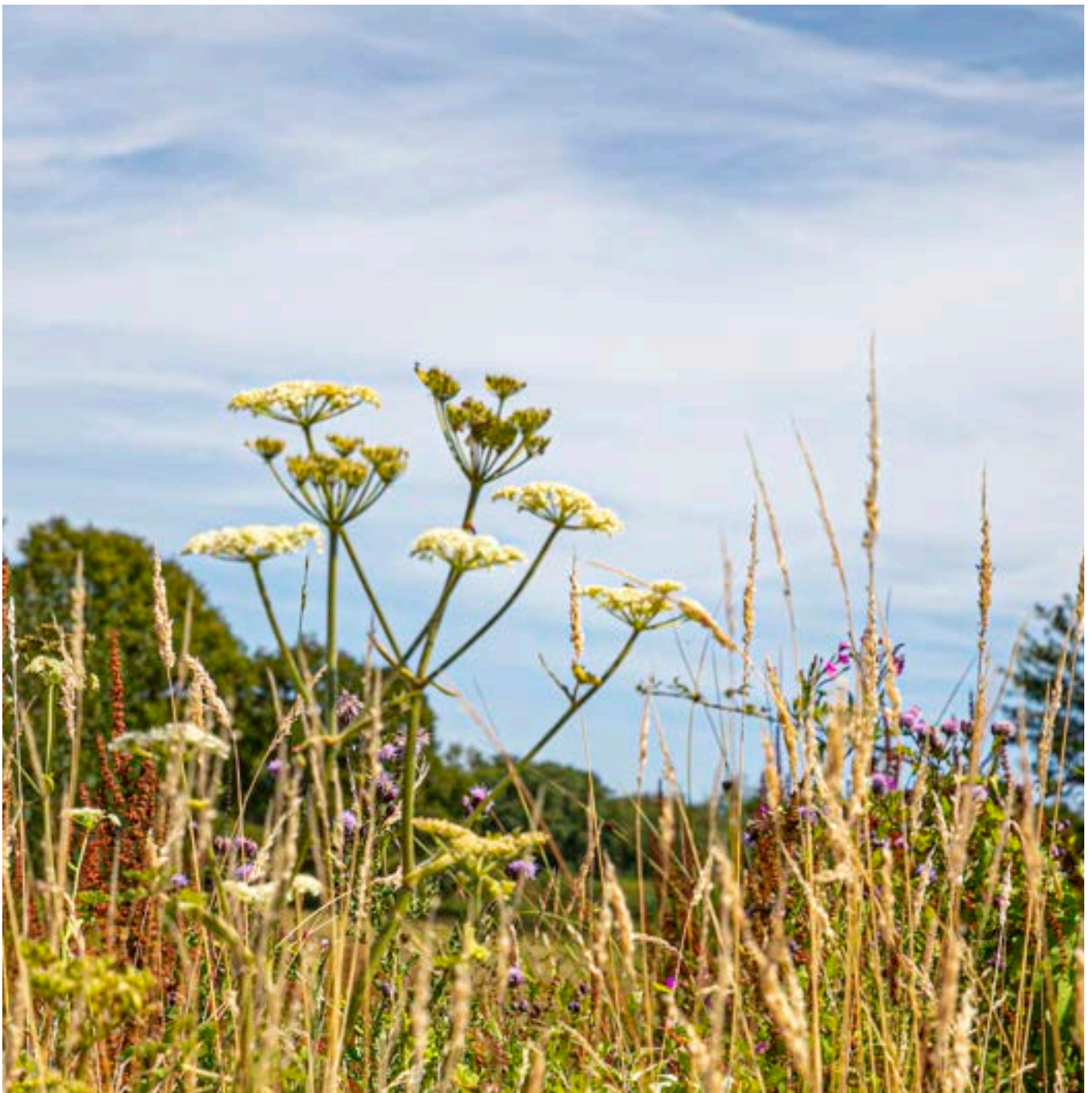
Berewood News

IN THIS ISSUE

LAND SALE UPDATE

HEDGEHOG HIGHWAYS

COMMUNITY PLAN STEERING GROUP



Land Sales Update

We are delighted to announce that the next phases of land are now up for sale.

Kentidge Coppice and the northern half of Daubenton Glen are now on the market.

The two phases will bring an additional 192 homes to the site. 40% of these will be a combination of shared ownership and affordable rent.

Grainger Plc is the master developer of the site. We own the land and sell phases to house builders, manage the green spaces, infrastructure, and legal obligations with the local authorities.

We work closely with many different consultants and partners to ensure Berewood is a wonderful place to live, not just for people but also the local wildlife.

Should you have any questions regarding the development you can contact the team at berewood@graingerplc.co.uk



Latest Timescales

Please note these dates are estimates only and subject to change

- Bloor Homes on site (Larkfields & Woodlands Edge) Spring 2022
- Berewood Town Park second phase (including cricket pavilion) to commence Spring 2022 estimated completion 2025
- Marrelsmoor Avenue connection works to start spring 2022, complete spring 2024
- Southern Access Junction (Ladybridge Roundabout) work anticipated to start Sept 2022
- Newlands Avenue connection works to start 2023
- Northern allotments complete 2023
- Second Primary School complete and open Sept 2024
- Community Centre anticipated to open 2025
- Other elements of the Local Centre delivered within next 5 years (not including Health Centre and Extra Care facility which are subject to NHS and Hampshire County Council, timescales still to be confirmed)



Berewood Green

Current Site Works

Several areas of the site have additional works taking place:

- Ground works to prepare for the landscaping and cricket pitch on the second phase of Town Park.
- Remediation works to the roads on the earlier phases of the site to prepare them for adoption by Hampshire County Council
- Proxima Park are building their next industrial unit



Hog Roast Tuesdays

Vist the Simply Hog Roast van on the Houghton Avenue roundabout every Tuesday from 5-8pm.

Take a stroll on a Tuesday night and treat yourself!

The full menu (including vegetarian options) and latest location updates are available via:

www.facebook.com/simplyhogroast



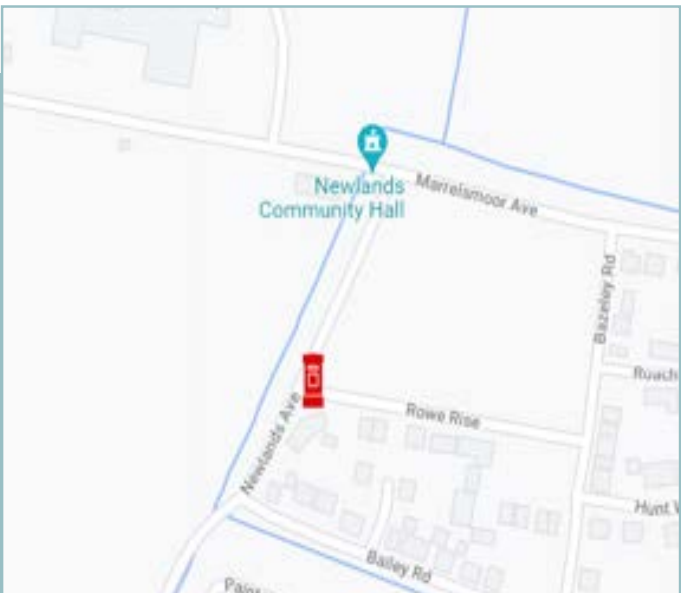
New Post Box

Royal Mail have installed a new post box at Berewood Green

The new post box is located on the corner of Rowe Rise and Newlands Avenue at the northern end of the site.

Ofcom guidance is that there should be a post box within 0.5 miles (straight line distance) of your home.

As the development grows Royal Mail will install more post boxes over time.



Berewood in Bloom Competition

Residents are invited to showcase their gardening talents, big and small!

There are some truly beautiful gardens at Berewood, and this summer residents will be invited to showcase their gardening skills and receive awards from a panel of judges.

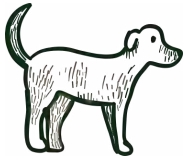
Categories will be designed to include a wide range of different areas; from stunning front gardens to efforts in conservation and supporting wildlife.

All ages and abilities will be welcome to enter, and there will be fun activities to help you make the most of your garden.

More details will be available in the next newsletter and at www.berewoodhampshire.com



Oak Vale Community Planters



Please Keep Dogs on Leads

Whilst your dog may be very friendly, others might not be!

There are lots of open fields in the nature reserve where your dog can run freely, but please be respectful of others in busier areas and public spaces such as Town Park.

Please keep your dog on a lead in these areas.

We are lucky to have a lot of wonderful wildlife at Berewood, some of which may be very tempting for dogs to chase!

Again, please be mindful of this when out on walks.

Thank you for your cooperation.



Wildlife Update

Rare Black Redstart birds spotted on site

With less than 100 breeding pairs of Black Redstart birds recorded in the UK, they are a rare sight indeed!

They are the size of a robin and males can be identified by their flash of red-orange feathers in the tail.

Popping a bird feeder in your garden is a great way to spot and support birds visiting and living at Berewood.

We are incredibly lucky to have such a varied range of habitats on the site so close together, increasing the desirability for wildlife. Even more new species will appear as we do further works to improve the Berewood Community Nature Reserve and surrounding areas.

With the abundance of woodland and hedgerows for foraging, the river for fish and insects, and the open fields for bugs and butterflies, for the birds at Berewood it is like having all your favourite restaurants next door to one another!



Black Redstart



Town Park Play Area



Newlands Parish Council

Formed in April 2019, the Council serves both Berewood and Wellington Park.

Newlands Parish Council works closely with Grainger Plc, Winchester City Council and Havant Borough Council to ensure that the development remains a desirable, safe and pleasant place to live.

As work on the development progresses, NPC will take on management responsibility for many of its open spaces, allotments and play areas.

Residents are welcome to attend council meetings to meet their councillors and, of course, pose questions. Meetings take place every month at Newlands Community Hall and the next one is on **Thursday 10th March at 7:30pm**.

The council will be publishing its brand new website soon, but in the meantime please feel free to contact them via clerk@newlands-pc.gov.uk or call 023 93 092357.



Who do I contact?

With lots of different teams on site, here is who responsible for what:

ROADS

Grainger - Houghton Avenue, Grainger Street, Marrelsmoor Ave, Newlands Avenue

All other roads are the responsibility of the house builder who built the phase

Eventually all roads will be adopted by Hampshire County Council and be managed by their Highways department.

TOWN PARK

Grainger are currently responsible for Town Park, which will in time be handed over to the Local Authority/Parish Council to manage.

GREEN SPACES

Grainger are responsible for the large areas of green space across the site, including the nature reserves, River Wallington, and phases still to be sold.

Smaller areas within phases are the responsibility of the house builder.

STREET LIGHTING

Unless on the main roads managed by Grainger (see left) these are the responsibility of the house builder who built the phase.

As with the roads these will in time be adopted by Hampshire County Council.

LITTER BINS

Bins along the roads and household waste are collected by Winchester City Council or Havant Borough Council.

Grainger are responsible for bins not on a road or in green spaces such as Town Park or nature reserves.

Please note all bins on site are suitable for dog waste.

We hope this helps clarify who to contact should you have an issue on site.

If you are still unsure, please contact the Grainger team: berewood@graingerplc.co.uk



Hedgehog Highway

Redrow have included special features for hedgehogs at Elm Green

Redrow has been working closely with specialists including the British Hedgehog Preservation Society to champion the Hedgehog Highways Initiative and create a better landscape for hedgehogs in new residential developments.

As a result, a series of pipes and strategic gaps in fences have been installed across Elm Green to give hedgehogs better access across the area.

Other things you can do to help local hedgehogs:

- Let areas of garden grow wild to mimic hedgehogs' natural habitat
- Provide shelter in the colder months through logs piles and compost heaps
- Leave out water and foods such as boiled eggs, chopped nuts and sultanas.



Community Plan Steering Group

Next online meeting 7pm Weds 9th March

The Community Plan Steering Group is now up and running, with residents from across the site getting involved.

The group will help support future events and projects that are important to residents. These might include organising a summer fete, helping to plant a community orchard, co-ordinating Christmas food bank donations, road safety schemes, or planning street parties for the Queen's Jubilee.

More members are very much welcome, no matter how much or little time you have to spare. Your input will help shape the future of the community at Berewood and across the Newlands Parish, so please use this opportunity to have your voice heard.

For more information & meeting invitations please contact:

Laura Bevis - laura.bevis@havant.gov.co.uk



Image courtesy of Ben Gould. Instagram: @benjigould



Grainger Trust Housing Association

40% of homes at Berewood are either affordable rented or shared ownership, all managed by Grainger Trust

The Grainger Trust team work closely with local authorities, house builders and the Grainger Berewood Management Team to ensure all residents' needs are met.

This includes adapted homes for disabled residents and a tenure blind approach; homes located across the site are all delivered to the same high standard, whether privately purchased or not.

To find out more about Grainger Trust please visit corporate.graingerplc.co.uk/properties/granger-trust or call the team on 0330 053 9998



Walk to School Week

This year's Walk to School Week will be from Mon 16th - Fri 20th May 2022

Last year Berewood Primary School took part in the Walking Superpowers 5-day challenge and we are looking forward to seeing what this year's theme will be.

The week-long activity has been created to help children reach their recommended 60 minutes minimum of physical activity per day before they even reach the school gates.

Not only will it set them up for a positive day in the classroom, but it will also help create healthy habits for life.

With so much green space, walking to school at Berewood also gives children the opportunity to experience more of the natural world around them.

Visit www.livingstreets.org.uk for more information on how to take part in additional challenges and get rewards!



Got a question?

Contact us

For all site queries:

berewood@graingerplc.co.uk

To rent with Grainger at Berewood:

berewoodprs@graingerplc.co.uk

To find out more about the development:

www.berewoodhampshire.co.uk



@berewoodhants



@berewoodhants



facebook.com/berewood



A development by

grainger plc