

Berewood News

IN THIS ISSUE

WILDLIFE TRUST PARTNERSHIP
GREAT BIG GREEN WEEK RETURNS
BEREWOOD IN BLOOM WINNERS



Latest Site Updates & Timescales

Please note these dates are estimates only and subject to change

- Bloor Homes now on site (**Larkfields & Woodlands Edge**) **Woodlands Edge** groundworks commenced
- **Berewood Town Park** second phase (including cricket pavilion) to commence autumn 2022, estimated completion 2025
- **Marrelsmoor Avenue** connection works underway, complete spring 2024
- **Newlands Avenue** connection works anticipated to start 2023
- **Northern allotments** aiming to be complete 2023
- **Second Primary School** delivered by Hampshire County Council, planned to be complete and open Sept 2025
- **Community Centre** anticipated to open 2025
- Other elements of the **Local Centre** delivered within next 5 years (not including Health Centre and Extra Care facility which are subject to NHS and Hampshire County Council, timescales still to be confirmed)
- **Kentidge Coppice & Daubenton Glen** sale underway



New Wildlife Trust Partnership

Berewood is now an official partner of H&IWWT and a member of Team Wilder

We are delighted to announce our official partnership with the Hampshire & Isle of Wight Wildlife Trust. We are immensely proud of the 250 acres of green spaces we manage on site, and with your support we can keep them flourishing forever.


What does this mean for Berewood residents?

We will be holding events, running activities, sharing resources and tips for you to help make a difference to the nature on your doorstep.

In the coming months we will be looking for residents who have an interest in protecting and enriching local green spaces to become part of our Team Wilder. To find out more about the scheme and how you can help, please visit hiwwt.org.uk/team-wilder



Hampshire & Isle of Wight
Wildlife Trust



BEREWOOD in Bloom

Competition Winners

Last issue we ran a competition to showcase residents hard work creating their beautiful gardens. Each winner recieved a £50 Amazon voucher and a Berewood in Bloom trophy!

Environmentally Friendly - Hannah Pitt

The judges loved Hannah's specially considered planting to support local wildlife.



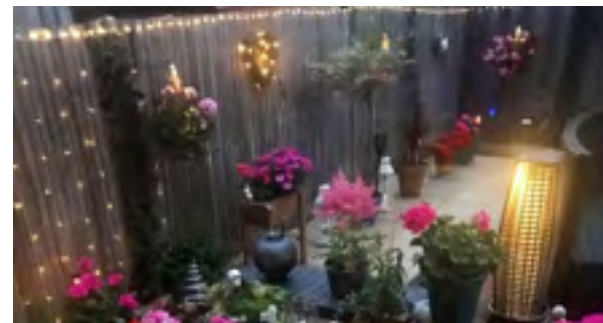
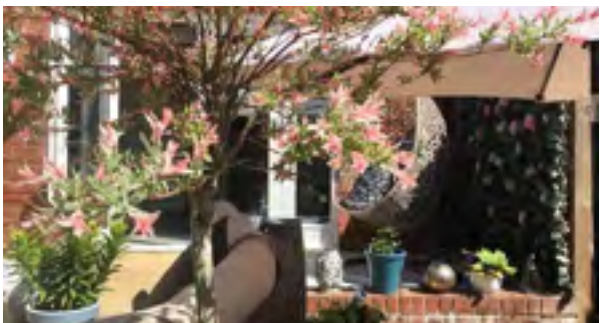
Blooming Marvellous - Alex Hayter

Alex's borders bursting with colour and variety won her the top prize in this category.



Landscaper Extraordinaire - Margaret Thorn

The relaxing cosy spaces and beautiful solar lights in Margaret's garden had the judges green with envy!



Great Big Green Week

24 September - 2 October
In partnership with Havant Climate Alliance

Following the success of last year's events, we are again taking part in the Great Big Green Week, the UK's biggest ever celebration of community action to tackle climate change and protect nature.

There are 2 events at Berewood for residents to take part in:

Sun 25th Sept
Wildlife Walk for Adults

Join our expert Ecologist for a walk around the site learning all about the wide variety of wildlife that calls Berewood home.

Sat 1st October
Bug Mug Houses with the Wildlife Trust

Recycle an old mug and create a welcoming home for insects for your garden. Family activity.

Book onto all our events via our website:
www.berewoodhampshire.co.uk

Find out more about other GBGW activities in the area, from sustainable fashion shows and plays, to plant swaps and coffee mornings:

www.havantclimatealliance.com



Create'n'Chat

Mixed craft sessions for all abilities

This new craft group has been established for all ages and abilities, working with a different craft each week.

Come along to share ideas, be inspired, and have a chat. A chance to learn from one another, attend craft demonstrations and have a relaxed, fun time!

There'll also be the chance to support charities, pick up some freebies, and swap or sell resources as well as gaining new skills.

Thursdays 10:30am - 12:30pm

Newlands Community Hall, PO7 3BX

£5 per person per session

Contact createnchat@gmail.com or search 'createnchat' on facebook



Proxima Park Sustainability

Measures are being undertaken to further reduce the carbon footprint on site

The growing industrial park at the north of the Berewood site is hoping to continue their BREEAM 'Excellent' rating for the additional units currently being built. (Excellent: Top 10% of UK new non-domestic buildings (best practice)).

As well as more efficient design and material selection, they are also including:

- Improved insulation and air tightness
- Latest LED lighting technology and controls
- Cloud-based energy monitoring
- 20% car spaces with electric vehicle charging points, and infrastructure in place to increase this to 100%
- Installation of renewable energy generation with air sourced heat pumps and PVs

Find out more at www.proximapark.co.uk

What does BREEAM measure?

BREEAM or Building Research Establishment Environmental Assessment Method is a sustainability assessment method which evaluates the procurement, design, construction and operation of a development against a range of targets based on performance benchmarks.

It focuses on sustainable value across range of categories:

- Energy
- Land use and ecology

- Water
- Health and wellbeing
- Pollution
- Transport
- Materials
- Waste
- Management



Each category focusses on the most influential factors, including reduced carbon emissions, low impact design, adaption to climate change, ecological value and biodiversity protection. Independent licenced assessors carry out the assessments. 🌀



Automatic Traffic Counters

Collecting valuable data on vehicle movements at Berewood

You may have spotted black tubes across a number of the roads around Berewood recently. These tubes are known as Automatic Traffic Counters and are installed to collect vehicle speeds and count vehicle numbers in and out of the development.

They are normally only in place for about 8 days and we need to undertake this kind of survey annually. If you see them, please leave them alone whilst they do their important job.

We collect this data to monitor the number of vehicle movements that our development creates, as part of our Travel Plan agreement with Hampshire County Council. We use the data to ensure we are meeting the demands of the development, and can adjust future plans if needed.

Council Residents Portal

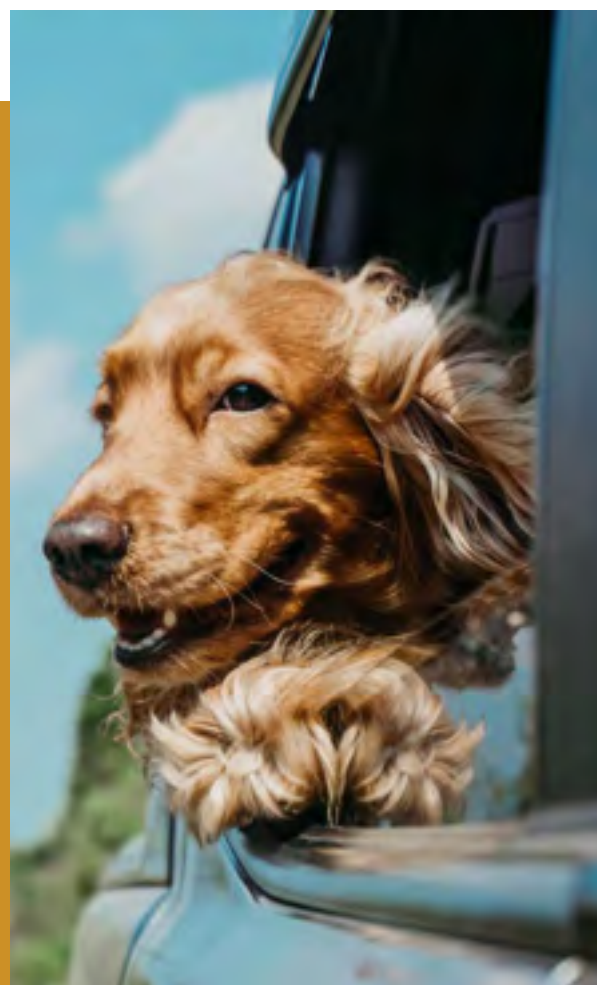
Report and manage problems online

Residents living within the Winchester City Council boundary, which is currently all phases except Yew Gardens, can report issues with bin collections, abandoned vehicles, lost dogs, manage your garden waste service, and more.

Visit www.winchester.gov.uk/apply

Please note you will need to create an account.

Yew Gardens residents can visit havant.gov.uk to report any issues as above, view bin collection days and find your local Councillor.



Petrol Saving Tips

As the majority of Berewood households have more than 1 vehicle, below are some top tips to save you ££'s

With the cost of living skyrocketing, here are a few things that you can do to help reduce running costs:

Keep your car in good working order

This includes making sure your tyres are the correct pressure. A car that is well looked after will run better and be more efficient.

Reduce air resistance and lighten the load.

Where you can, clear your boot out and remove bicycle racks or roof racks. The lighter and more aerodynamic your car, the less fuel it needs to travel.

Check your speed

Department for Transport (DfT) figures show that driving on the motorway at 80mph uses around 25% more fuel than driving at 70mph. Travelling at 70mph instead of 60mph will use 9% more fuel, and an additional 5% more than driving at 50mph.

Keep air conditioning and heating to a minimum

During the summer, if you're travelling at low speeds consider opening windows or have the air conditioning on for a short while and then turn on your car's air recirculation button to continue to feel the benefits of that cool air.

Brake and accelerate gently

By anticipating the road ahead, drivers can brake and accelerate less, helping boost fuel efficiency.

Drive in the correct gear

The rule of thumb is 'high gear for low revs' meaning less fuel consumed.

And of course when possible leave the car at home and walk, cycle or take public transport instead!

Journey planner for local bus routes at firstbus.co.uk

Local cycle routes available at cyclinguk.org



Jubilee Celebrations

Residents went all out this June in honour of Her Majesty

Residents of our Yew Gardens phase celebrated the Platinum Jubilee in style on Sunday 5th June by holding a Big Jubilee Picnic in the park. The event featured crown and craft making, face painting, a raffle, 'Best Dressed House' contest, and even their very own HRH of Yew Gardens!

Their fantastic raffle with prizes donated by local businesses also raised a whopping £400 for Rowans Hospice!

A huge thank you to all the residents who helped to organise and everyone who contributed to this wonderful event.



Your Parish Council



The Berewood and Wellington Park developments make up the parish of Newlands, which sits within the Winchester City Council boundary. Yew Gardens is officially part of Havant, however the parish council will still assist residents where they can.

The Grainger team have regular meetings with the Council to keep them up to date and discuss anything which may affect residents within the parish.

Visit www.newlands-pc.gov.uk to find the latest updates, plus information on your councillors and the community hall.



Travel & Community Survey

Our annual survey gathers information on travel and your neighbourhood to help highlight local issues, giving us valuable feedback on what residents need and where to improve.

For example, last year we received comments that you wanted to know more detail about the timescales of the development. We are now giving regular updates via this newsletter, our website, and on social media to keep you better informed of development progress.

We'd very much appreciate you taking a couple of minutes again this year to complete the survey and tell us your thoughts so we can do our best to make this a wonderful place for you to live.

This year we are offering the chance to win a £25 Amazon voucher! Every survey completed is entered into the draw.



Please scan the QR code above or visit www.surveymonkey.co.uk/r/BerewoodYr2

(Closing date for the draw is 31st August 2022)



Got a question?

Contact us

For all site queries:
berewood@graingerplc.co.uk

To rent with Grainger at Berewood:
berewoodprs@graingerplc.co.uk

To find out more about the development:
www.berewoodhampshire.co.uk



@berewoodhants



@berewoodhants



facebook.com/berewood



A development by

grainger plc