

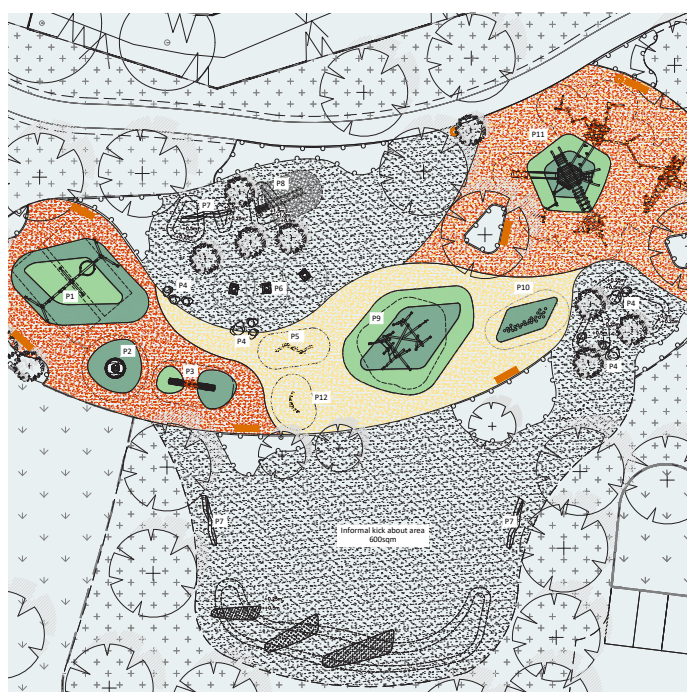
Berewood News

IN THIS ISSUE

LONELINESS AWARENESS WEEK

WILDLIFE WATCH: TREE PLANTING

SPOTLIGHT ON WATERLOOVILLE



Coming soon to Berewood!
Our new play area adjacent to the southern allotments. Ready for Autumn 2025. Here is the plan and images of the equipment which have been ordered and are currently being built. An inclusive space for children to explore and have fun.

Welcome to the 13th edition of the Berewood News.

In this edition we look back over the diverse range of events that Grainger Plc have supported since the last edition in December. We interview James Fuller at James Fuller Arboriculture to learn more about the tree planting and preservation programme on the Berewood development. We also have the up to date Events calendar where we share upcoming events community partners are organising in the coming months. On the front cover you will see images of the play equipment that will be going in at the new play park by the Southern allotments, due to be completed by the end of 2025.



Berewood Masterplan 2025

Latest Site Updates & Timescales

Please note these dates are estimates only and subject to change.

- **Local Centre** – Legal discussions with the developer are progressing well. In the next edition of the Berewood News we hope to be able to share with you the proposed layouts. The local centre will include a community hall facility, nursery facility, 4 commercial units and a convenience store with parking, potentially including electric car charging points.
- **Bloor Homes – Woodlands Edge** to be completed late summer 2025. **Larkfields** nearing completion end of 2025. Phase 8 is now in for planning with intention to start end of 2025
- **Redrow Homes – Ash Gardens** commenced and ongoing
- **Bargate Homes** – Will be submitting their planning application imminently for Phase 11B and subsequently will submit their planning application for 10B thereafter
- **Persimmon Homes** – Located on the **Barnfield** parcel they are currently seeking planning approval and anticipate to commence 2025
- **Berewood Town Park** – Phase B is currently in planning with intention to start end of 2025
- **Marrelsmoor Avenue** – final surfacing due Autumn 2025
- **Safe Routes to School** – due to start construction Summer 2025
- **Newlands Avenue** – expected to complete Summer 2025
- **Northern Allotments** – planning approval has been received. Works began in April, expected to complete Autumn 2025
- **Southern Allotments** – works commenced in May with an expected completion of Autumn 2025. To also include new play area and parking facilities.
- **Newlands Primary Academy** – On track to complete July 2025 ready to open September 2025.
- **Community Nature Reserve** – to include two dog agility areas and children’s play area planned commencement Autumn 2025 🐾

You Asked... We Actioned!

We held the drop-in surgery for residents on Thursday, 13th March 2025.

- 1 A very young residents who attended was very passionate about tree conservation and we were able to share with him the tree planting programme that has begun (see interview with James Fuller on page 7)
- 2 Grainger Trust residents were anxious to speak with the team about necessary roof works to one of the blocks of flats. The GT team were able to discuss residents’ concerns and take notes to then feedback to the developer for a resolution.
- 3 A couple of residents who attended talked with us about financial planning for future home purchasing. We have introduced a new section within the Berewood News where Laura North, Financial Planning, St James’ Place gives some top tips (see page 18)

The next “You asked... We actioned” drop-in surgery

3.30pm to 6.30pm on Thursday, 18th September 2025

At Newlands Community Hall, Marrelsmoor Avenue, Berewood, Waterlooville, Hampshire, PO7 3BX.

Meeting loneliness together

Loneliness Awareness Week
9th – 15th June 2025

It's a common misconception that loneliness is limited to older people.

In fact, 16-24 year olds are the age group most likely to report feeling lonely. In 2023, a survey from Nextdoor in partnership with **Marmalade Trust** revealed that 85% of UK adults had experienced loneliness in the last 12 months. Almost half (44%) felt chronically lonely. With loneliness linked to poorer health outcomes and economic downturn.

The Grainger team wanted to share with residents this national charity and raise awareness of their yearly '**Loneliness Awareness Week**' commencing Monday, 9th June 2025.

Marmalade Trust is a national award-winning loneliness charity for all ages, dedicated to raising awareness of loneliness and supporting people to find new social connections. Since 2013, they have directly helped thousands of people and have reached millions more. Their mission is simple: to create a society where we recognise that loneliness exists and support each other to make new connections.



- The theme of this year's Loneliness Awareness Week is Reducing Stigma and our campaign ident is Meeting Loneliness Together. Encouraging everyone to help reduce the stigma surrounding loneliness by creating supportive communities where people can have honest conversations about how they feel.

Taking part doesn't have to be hard – anything that creates connection counts: from a coffee morning or group walk, to a fundraising dinner or quiz night.

- Our wonderful project Marmalade Connections supports those in our community who are socially isolated, and who experience chronic loneliness (feeling lonely all or most of the time). It's a time-limited, one-to-one project based on the enabling/empowering social prescribing model, trained volunteers make weekly calls to project members for up to 15 weeks, focusing on their specific needs and interests.

These conversations lead to volunteers signposting the project members to local social activities and community support, to improve their social connections long term.

If you would like to be supported via Marmalade Connections or if you would like to become a volunteer on Marmalade Connections please email us: info@marmaladetrust.org

If you're organising an event, be sure to let Marmalade Trust know by uploading your event to their map on the campaign website, lonelinessawarenessweek.org, and contacting us at info@marmaladetrust.org

Suella Braverman MP Fareham and Waterlooville **SENIOR CITIZENS' FAIR**

Exhibitors to include:

- Health advice and support
- Social activities and clubs
- Home support
- Shopping support
- Social support groups



Friday 6 June 2025
1.30pm – 3.30pm

FREE ADMISSION

COME TO

Wallington Village Hall
Broadcut • Fareham
PO16 8ST

INCLUDES

- Chat with your MP
- Free Health info
- Stalls and much more!

FOR MORE INFORMATION

t: 01329 233 573
w: www.suella.braverman.co.uk
e: suella.braverman.mp@parliament.uk

EXHIBITORS TO INCLUDE

CommUnity First *recapture life*
making life better for everyone

Suella Braverman MP *A Strong Voice for Fareham & Waterlooville*

Funded from allowances made available to Suella Braverman MP



WHAT'S ON?

20
25

WED

WELLBEING WALK-IN

4PM

For 11-25yr olds. Every Wednesday
@Southdowns Social Cafe

WED

PARENT SUPPORT GROUP SWANMORE

10AM

Last Wednesday of each month
@Swanmore Methodist Church

WED

PARENT SUPPORT GROUP WINCHESTER

10.15AM

2nd Wednesday of each month
@Vineyard Church

THU

PARENT SUPPORT PROGRAMME

6PM

Quarterly info sessions - booking req.
@Solent Mind Wellbeing Centre

DROP-IN'S / GROUPS

For more information:
01962 820 444

www.winchyc.org/events

Craft Fair HSDC SOUTH DOWNS

(FORMERLY SOUTH DOWNS COLLEGE)
WATERLOOVILLE - PO7 8AA

FREE ENTRY

FREE PARKING



COME AND SEE A WIDE VARIETY OF LOCAL MAKERS
ON THE FIRST SUNDAY OF THE MONTH*

DOORS OPEN AT 11.00AM CLOSE AT 03.00 PM

2025 DATES

FEB	MAR	APR	MAY	JUL
02	02	06	04	06
AUG	SEP	OCT	NOV	DEC
03	07	05	02	07

*EXCEPT JANUARY AND JUNE

FOR UPDATES AND MORE INFORMATION, FOLLOW US ON SOCIAL MEDIA



CRAFTY_ME_CRAFT_FAIR

Crafty Me Craft Fair

@CRAFTYMECRAFTFAIR



TO SELL WITH US VISIT WWW.CRAFTYMECRAFTFAIR.CO.UK



www.marmaladetrust.org/law

Help Shape the Future of Public Art in Newlands, Berewood and the Wider Waterloooville Area

Plot Lines is a new creative project inviting local people to help shape the future of public art in your area.

Public art can take many forms – murals, sculptures, performances, podcasts or events – and what makes it powerful is that it's shaped by the people who live there.

The project is currently working with writer-in-residence Aoife Mannix, who's using storytelling and poetry to bring people together and spark fresh ideas. This is part of a wider public art plan being developed for Waterloooville.

Two new groups are being set up – one for adults and one for young people aged 14+ – to explore what art in public spaces could look like, and how it can reflect the local area and its stories.

Group members will take part in regular sessions (a mix of in-person and online), meet new people, and help guide future creative projects. Everyone who takes part and attends sessions will receive a £100 One4All gift card, with chances to join inspiring trips and hear from guest speakers working in arts and community projects.

You don't need to be an artist – just curious, creative and interested in having a say in your local area.

We're holding Zoom online drop-in info sessions for anyone interested in learning more:

Young People & Adults: **Thurs 12 June, 7pm**

Parents/Guardians: **Thurs 5 June, 7pm**

Visit www.plotlines.co.uk to apply, find Zoom links, or read more.

Deadline to apply: **23 June 2025**

Questions? Call/text Gail on **07930 397982** or email hello@plotlines.co.uk

Plot Lines is led by **Studio Response** and commissioned by **Winchester City Council** with funding from developer contributions.



www.plotlines.co.uk



Havant Symphony Orchestra

Havant Symphony Orchestra

Walton

Gordon Jacob

Britten

Bliss

Henry Wood

Arne

Parry

Elgar

Crown Imperial

Old Wine in New Bottles

Serenade for Tenor, Horn and Strings

Royal Fanfare

Fantasia on British Sea Songs

Rule Britannia

Jerusalem

Pomp and Circumstance No1

Scan for Tickets

Saturday 12 July 2025, 7.30pm

Oaklands School Concert Hall

Waterlooville PO7 7BW

Tickets £5, £15, £20

Visit havantorchestras.org

Call 0333 666 3366

Presented by Havant and District Orchestral Society

Registered Charity No 288747

making music

SUPPORTING & CHAMPING VOLUNTARY MUSIC

SPRINGWOOD COMMUNITY CENTRE

02392 230330

SUMMER FAIR

FAIRGROUND RIDES, INFLATABLES,

CRAFT STALLS, LIVE PERFORMANCES, SWEET

TREATS, BURGERS/HOT DOGS, ICE-CREAM,

PRIZES, SOME OF YOUR FAVOURITES AND MORE

SUNDAY 13th JULY 2025

12noon to 6pm

Disco 6pm to 9pm

FREE ENTRY

FREE ENTRY

FREE ENTRY

Springwood community foundation

Springwood community centre

110 Springwood Avenue

Waterlooville, PO7 8BJ

Charity number 1207156

Email: office@springwoodcc.co.uk

Wildlife watch

Join Hampshire & Isle of Wight Wildlife Trust to discover what nature is living on your doorstep

We discovered some sweet little Harvest Mouse nests (currently not being used). We were able to preserve one and take it into Berewood Primary to show Year 4. During one of Craig's workshops as part of the Wilder Schools Project we talked with the children in more detail about the wildlife on the development and went on a bug hunt. Five new fruit trees and wildflowers were planted over the Spring, ready for the bees to enjoy in the summer.

Join Hampshire & Isle of Wight Wildlife Trust to discover what nature is living on your doorstep and how we can help make space for nature in our outdoor spaces. Go on the minibeast trail using sweep nets and bug pots to see what you can find and complete the trail to win your prize! Then have a go at making a butterfly/bee drinker that you can take home and watch the butterflies visit in your outdoor space.

This free session is bookable here for **Friday, 29th August**. Venue: **TBC**.

10.30am to 12noon

www.eventbrite.co.uk/e/family-bug-hunt-trail-and-butterfly-feeder-making-tickets-1348284718889?aff=oddtcreator

1.30pm to 3.00pm

www.eventbrite.co.uk/e/family-bug-hunt-trail-and-butterfly-feeder-making-tickets-1348330856889?aff=oddtcreator

James Fuller
Arboriculturist

James Fuller Arboriculture has been on site in the spring planting 465 tree and hedge whips as part of a woodland infill planting programme and ecological hedge improvement across the development.

It was decided that a range of species would be planted to encourage diversity within the woodlands and provide new habitats for dormice, during this element of the programme we have planted; Hazel, Alder, Oak, Sweet Chestnut, Field Maple, Birch, Beech, Hawthorn, Blackthorn, Guelder Rose, Hornbeam and Holly. This will help to provide habitats for a range of wildlife and maintain and improve canopy cover in areas of woodland and across the site.

James Fuller Arboriculture have been involved with the Berewood project for 8 years, providing support to the team helping to develop a programme to protect and nurture the trees across the development for future generations to continue to enjoy the woodlands and open spaces that surround the development.

Protecting wildlife (insects, bugs, trees and flowers) across the development are paramount and we have noticed such a difference in the reduction of litter as so many of those who live and work here go out regularly to pick up litter. Of course it would be soooo much better if it wasn't dropped in the first place but thank you to all those residents who do go out of their way to visit areas and collect litter.

Spotlight on Waterloooville



The Exchange has come to Waterloooville, just a ten minute walk from Berewood!

Nestled in a beautifully restored former bank, The Exchange restaurant is at the heart of an exciting initiative to revitalise Waterloooville town centre. Created by local restaurateurs Kalam, Kaz and Steph, the restaurant provides a welcoming and safe space for customers to gather.

Guests can enjoy a delicious range of options, from breakfast / coffee & cake to lunch / dinner, all within a setting that blends elegance with comfort. Whether you're visiting for a family outing, hosting a private event, or sharing a meal with friends, The Exchange offers accessibility, sophistication, and community.

The menu is thoughtfully curated with fresh ingredients, ensuring a memorable dining experience. From hearty breakfasts to indulgent lunches and dinners, each dish is crafted to satisfy your cravings.

Relax in style with a range of seating options designed for comfort. The drinks menu features a carefully selected collection of wines, beers, and signature cocktails, perfect for pairing with your meal or enjoying on their own.

We booked the VIP room for an evening meeting. It was very comfortable, and the staff were all very polite and attentive. I will definitely be returning with my family soon to support this new business. 5/5

Came here for a family meal last night and the food and service was amazing.

www.exchangewvl.co.uk

@exchangewvl
 exchangewvl



George who runs this not-for-profit organisation has lived and trained in the local area for over 30 years.

He set up Waterloooville Boxing in it's current venue in the town two years ago and it's been a huge success.

George is particularly passionate about giving young people a place to come, feel safe, exercise, meet new friends and learn new skills. No previous experience is necessary, that's part of the fun, anyone can come along and have a go. Gym sessions are open Monday, Tuesday, Thursday and Friday 5pm to 7.30pm (Wednesdays are carded boxers only) and Saturday mornings. All details are on their website or you can find them on Facebook.

Whether you are an adult or a student you will learn a range of disciplines; skipping, physical training, boxing skills. "I love working with the local community, the kids around here are great. This is my life. We are an inclusive club, we have dedicated staff to work with children of all abilities."

Nathan, trainer "It's great to see all the kids working together, team work and learning to work alongside others is a key skill in life. They come here and they learn to work together."

Recently Emma has joined the team offering a new Fun Fitness for women on Mondays at 7.30pm, Wednesdays 7.30pm and Friday 10am. These are women only sessions.

Jodie, a local mum told me;

This is my third child that has benefited from coming to Waterloooville Boxing. Coming regularly has helped improve their confidence, George has helped them so much with their discipline which is evident in their school work as well.

www.waterlooovilleboxingclub

WaterlooovilleABC

Armed Forces events

Havant Borough Armed Forces Stakeholder group

This partnership group is made up of local groups, organisations, services and businesses that work with, or provide support for members of the Armed Forces, their families and/or veterans.

If you would like to be involved or receive updates, please contact the Community Team via email – askcommunity@havant.gov.uk

Newlands Community Group remembers

Newlands Community Group and Newlands Parish Council ran two successful events celebrating the end of WW2 in Europe. The second being NCG running the VE80 fete on Sunday 11th May. This free event brought the community together to remember and celebrate.

The next event they will be organising is VJ80 Celebration on Friday, 15th August 12.30pm – 4.00pm, details to be found on their website and Facebook page.



TOGETHER WE CAN

HOUNDS FOR HEROES

Our application process is open to all HM Armed Forces and Emergency Services personnel who have become disabled through illness or injury.

Find out who is eligible

Follow us

Hounds for Heroes is a registered charity in England and Wales (1134359) and Scotland (SC043751)
A company limited by guarantee, registered in England and Wales (07130031)

Havant Get Up & Go

Get Up and Go is a Havant borough project offering physical activity opportunities to residents of the Havant borough.

Get Up and Go is a Havant borough project offering physical activity opportunities to residents of the Havant borough. We try to provide a range of fun activities which utilise and help us appreciate our beautiful local area and help to make it as enjoyable and easy as possible to be active. To find out about what we have on offer please visit our website



www.getupandgohavant.com/book-activities?category=e4cfde07-223b-4e58-a110-6d2a9bbfcb03

What activities are local to you? Outdoor circuits are delivered twice a week in Jubilee Park, Zumba Gold at the Cowplain activity centre, Rambler's wellbeing walks and FREE guided walks at Staunton Country Park. To find out more or to book your place please visit our website and go to 'book activities' here you will find ALL our activities in one place!



Community food support initiatives

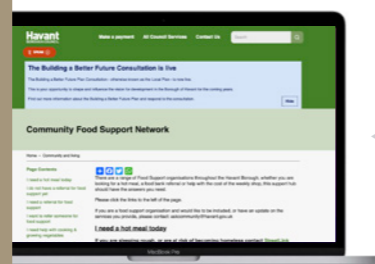
There are a wide range of community food support initiatives across the area.

Whether you find yourselves, a neighbour or relative in need of support go to the following links or pop into the Berewood Office (next to the Newlands Community Hall) for details.

www.feedhavant.co.uk/get-involved



www.havant.gov.uk/community-and-living/community-food-support-network



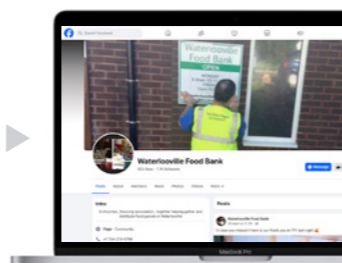
www.alfiesarc.com



www.winchesterbasicsbank.co.uk



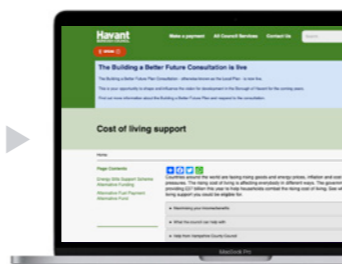
Waterlooville Food Bank Facebook



Care and Share Waterlooville Food Bank Facebook



www.havant.gov.uk/cost-living-support



Complete our annual resident questionnaire

It's that time of year again, when we'd like to get your thoughts on where you live and how you travel. This year we are offering one lucky entrant the chance to win a £25 Amazon voucher.

By filling out this survey you will help us to understand how and why you choose to travel by your chosen mode and what would encourage you to travel in a more sustainable way.



To participate you can either complete the paper survey provided with this newsletter, scan the QR code or use this survey link: www.surveymonkey.com/r/Berewood5. This will also enter you into the draw for the amazon voucher (Closing date for the draw is ###.)

ROAD SAFETY



We have been having discussions with Newlands Parish Council and Berewood Primary School as we have been concerned about dangerous driving. The Parish Council are looking at having a day where they capture the speed of traffic around the school in particular. Grainger have installed new school signage to alert traffic and encourage a reduction in speed. We ask those crossing at school times to be vigilant and following the Child Accident Prevention Trust tips:

THINK: Find the safest place to cross

STOP: Stand on the pavement near the kerb & make sure that you can see the traffic

LOOK & LISTEN: Look all around you for traffic and be sure to listen carefully for things you can't see

WAIT: Wait until it is safe to cross. If traffic is coming, let it pass. If you're not sure, don't cross

LOOK & LISTEN AGAIN: When it is safe, walk straight across the road. Don't run or look at a phone. Keep looking and listening.



This helpful video is good for adults and children to watch to have discussions about road safety: <https://www.youtube.com/watch?v=DaqR9Oyf1Zw>

WALKING IN WATERLOOVILLE

Walking is simple, free and one of the easiest ways to get more active, lose weight and become healthier. The easiest way to

walk more is to make it a habit, this can include walking part of your journey to work, walking your children to school or just going for a walk with a friend.

There are plenty of walking opportunities in Waterlooville, with walking groups such as:

- Hampshire 40+ Walking Group
www.hampshirewalkers.org.uk/

To find out more about the walking opportunities that Waterlooville and Hampshire has to offer, as well as the health walks that are run by Walking for Health and Sustrans, visit myjourneyhampshire.com/walk/hampshire-walking-opportunities/

Recommended places to walk:

- The Queen's Inclosure- P08 8BG (100.35 acres) – a large wood with a diversity of trees and wildlife with a circular walking route. It is around a 35-minute walk or a 8-minute cycle
- Park Wood- PO7 7RN (8.38 acres) – a small oasis in a large urban area, well worth a visit to see its ancient trees as well as explore the pathways. It is around a 25-minute walk or 7-minute cycle.

USEFUL APPS FOR JOURNEY PLANNING

Komoot: A popular route planning app, focused on cyclists www.komoot.com

Strava: Free to use to track a variety of activities including walking, cycling and running. Paid subscription required for route planning. www.strava.com

Go Jauntly: A great app/website for finding local walks, where you can create a route with times which suite you. There is also the option to download for offline use (iOS only) as part of the optional premium subscription. www.gojauntly.com/features/walks-near-me

£3 Single Bus Fares! Until the end of 2025 every adult single bus ticket is capped at £3, although most trips are less. Visit the Stagecoach website or download the App to find out how much your journey could cost. For more information visit: <https://www.gov.uk/guidance/3-national-bus-fare-cap>

Bedhampton Railway Station: Your nearest train station is Bedhampton Railway Station, which is operated by Southwestern Railway approximately 5.5km away which is a 23-minute cycle or around 40-minute bus ride (including service 37). The station provides regular services terminating at:

- Portsmouth Harbour – 16 minutes
- London Waterloo - 1 hour 34 minutes

Cosham Railway Station: Approximately 6km away which is a 21-minute cycle or around a 40-minute bus ride (including service 8 the star or 7 the star). The station is operated by Southwestern Railway and provides some further services to those from Bedhampton such as:

- Portsmouth – 18 minutes
- Fareham – 34 minutes
- Southampton Central – 45 minutes
- Brighton – 1 hour 11 minutes
- London Waterloo – 1 hour 54 minutes
- Cardiff Central – 3 hours 11 minutes

Education & Training

Thank you to Blanchard Wells, Paul Basham Associates, Ridge & Partners LLP, Mayer Brown and Tetra Tech who have all been into local schools and colleges with us this term giving students insight into housing and construction careers particularly during National Careers Week in March.



Over Easter the Grainger team invited Citizens Advice to deliver a Money Fun interactive morning where younger children were able come along, play games, listen to a story, create and talk about their own savings. Citizens Advice support adults across the borough at various drop in events. Here are the drop-in times at Waterlooille Library: Mondays & Wednesday: 10am – 2pm. Alternatively contact: www.citizensadvicehavant.org for bookable slots.



On Wednesday 28th May, Grainger funded and organised ‘Career Pathway’ with lots of local training providers and employers and the South Coast’s Tech+Tour visited Berewood! Delivered by South Hampshire College Group, in collaboration with Brockenhurst, City of Portsmouth, HTP Apprenticeship and The Isle of Wight Colleges alongside Hampshire Chamber of Commerce, Tech+Tour is an interactive technology roadshow that promotes careers in maritime, Logistics, Health & Social Care and Creative Arts through allowing visitors to get hands on with equipment used in those industries, such as VR, Augmented Reality, 3D printing, Marine Simulations and much more!”

If you were unable to pop along and keen to learn new skills and retrain ‘Skills for Life’ is a Skills Bootcamp project with a range of different learning opportunities. Link here <https://www.hants.gov.uk/business/skillsbootcamp/allskillsbootcamps> for courses in Coding, Air Source Heat Pumps, Construction, Health & Social Care, Early Years, Hospitality, Project Management. Alternatively browse Havant & South Downs, South Hampshire College Group and Itchen College’s adult learning programmes where there is a vast array of courses available that are flexible.

SKILLS FOR LIFE SKILLS BOOTCAMPS



ADULT TAILORED LEARNING

Hampshire County Council’s Adult Tailored Learning offers a range of courses in community venues across the county and online. If you’re looking to gain new skills or qualifications, improve your English, develop your skills to find work, increase your confidence, or improve your wellbeing, we have a course for you! These courses are FREE if you live in Hampshire and meet the residency eligibility criteria and you are aged 19 years +

- Working in childcare & schools (4 weeks online learning)
- Safeguarding awareness (childcare settings) (2 x 3 hr sessions online)
- Introduction to nutrition in children (2 x 4 hr sessions online)
- ESOL all levels (English speaking course)
- English & Maths courses

For further information www.ebsontrackprospect-hcc.tribal-eb.com/Page/FindCourse

Email the team: adult.learning@hants.gov.uk

School & College Open Day Dates

Havant & South Downs College:
Havant campus
Wednesday, 1st October 5.00 – 8.00pm and
Saturday, 8th November 10.00am – 1.00pm
South Downs campus
Tuesday, 7th October 5.00pm – 8.00pm
Saturday 8th November 10.00am – 1.00pm

SHCG (Bishopsfield Rd campus, CEMAST and CETC):
Fareham College (Inc. CEMAST and CETC)
Saturday, 28th June 11.00am to 2.00pm
Southampton College
Saturday, 14th June 11.00am – 2.00pm
Eastleigh College
Saturday, 21st June 11.00am – 2.00pm

Crookhorn College:
September 2025 (TBC)

Oaklands Catholic School:
September 2025 (TBC)

Cowplain School:
September 2025 (TBC)

Purbrook Park School:
Wednesday, 17th September 5.00pm – 8.30pm
Thursday, 18th September 8.30am to 12.00pm

Health and Social Care



Want to make a difference to people’s lives?
Have you thought about these roles? -Activities Coordinator
-Chef -Care Worker -Housekeeper -Kitchen Assistant -
Support Worker -Rehabilitation Assistant -Outreach worker?

It doesn't matter about your background or how old you are, if you want to help people there's a role for you. You don't necessarily need any qualifications or previous work experience. What's really important is your values and attitude.

You'll be helping people to live more independently and have a better quality of life.

Meet Employers- Guaranteed Interviews provided with a range of Employers. Training includes first aid, health and safety and food safety. You will work towards the care certificate and have continued support after the programme.

Come and join us 8th - 26th September
9:30 am - 2:30 pm every day (Mon-Fri)

Venue: Gosport Discovery Centre, High Street, Gosport PO12 1BT

For further information or to book onto the course please contact Itchen College Adult Education on 02380 435636 or courses@itchen.ac.uk

Newlands Primary Academy – Opens September 2025!

Newlands Primary Academy, a new-build school set on a 2-hectare site, west of the Berewood development is on target to complete in July 2025, ready for opening to Year R in September 2025. A wrap around provision will also be in place from September.



Newlands Primary has been designed as an environment to inspire a love of learning, using every means of discovery and with generous landscaped grounds, light and airy classrooms that can open directly to an outside area, play equipment and sports fields to give the children every opportunity to enjoy exercise and fresh air. Inside will be the latest ICT, a LRC at the heart of the academy, and an environment that inspires and engages all learners, including areas for quiet space. Our curriculum has been designed with care and creativity to excite and challenge all children, while responding to diverse learning needs.

There are spaces remaining for September 2025 admission and you can contact us at unicat@chi.ac.uk or by calling (01243) 793500 to learn more.

Mrs Jennifer Thornton is the appointed Headteacher and believes the views of the local community should be at the heart of the decision making as the school’s vision and ethos is shaped. **A drop-in session** was held on Monday 12 May. To voice your ideas go to www.unicat.org.uk/about-us/c

The school is part of the University of Chichester Academy Trust family, that comprise 17 schools, including Berewood Primary School, the first new-build school for the Berewood development.

The project is a traditional, full design approach with HCC Property Services retaining lead design responsibility through to completion.

We look forward to sharing more information with you and to welcoming you to the community’s new primary academy in September.

Events / Activities in the area



Waterlooville Summer Fete – 29th June – Jubilee Park Friday, 6th June, 1.30pm – 3.30pm Senior Citizens Fair (health advice / support / clubs) Wallington Village Hall PO16 8ST
Saturday, 7th June 11.30am & 2.30pm Havant Creation: The Bubble Show The Spring, Havant (family event tickets £13)
Tuesday, 10th & Tuesday, 24th June 12.30pm – 2.30pm Carers Companionship Café Newlands Community Hall
Tuesday, 10th June 10.00am – 2.00pm Cost of Living event run by Citizens Advice Beacon Church, Meridian Centre PO9 1UN
Tuesday, 10th June 7.00pm – 9.00pm Bingo – Newlands CG Newlands Community Hall
Thursday, 12th June Welcome & local resources session Hampshire Home Start (Havant)
Saturday, 14th June 11.00am – 3.00pm Family Fun Day FREE Bedhampton Community Centre
Saturday, 14th June 1.00pm – 4.00pm Repair Café – Newlands CG Newlands Community Hall
Saturday, 14th June Waterlooville in Bloom judging day Waterlooville Town Centre
Tuesday, 17th June 10.30am Heritage Walk: The History of Pre-history, Buster Hill Butser Hill (bookable The Spring, Havant) (tickets £7)
Saturday, 21st June 10.00am Wonder Gigs (family event tickets £5) The Spring, Havant
Saturday, June 21st 10.00am – 4.00pm Have your say on Building Better Future for Havant Borough face-to-face exhibition St George’s Church, Waterlooville
Monday 23rd June, 10.30am The Mayor of Havant flag raising event Public Service Plaza, Havant
Tuesday, 24th June 7.00pm – 9.00pm Newlands Community Group Meeting (all welcome) Newlands Community Hall
Saturday, 28th June 7.00pm – 9.00pm Quiz Night – Newlands CG Newlands Community Hall
Thursday, 3rd July Family Food, Fun & Fitness (Barnardo’s Input) Hampshire Home Start (Havant)
Saturday 5th July 1.30pm – 3.30pm TBC (see Facebook page) Litterpick – Newlands CG

Saturday, 5th July 5.00pm onwards Proms in the Park (tickets at Denmead CC, School Ln, Denmead, Waterlooville PO7 6LU) Denmead Community Centre
Saturday, 5th July Waterlooville Food Festival Waterlooville Town Centre
Tuesday 8th & Tuesday 22nd July 12.30pm to 2.30pm Carers Companionship Café Newlands Community Hall
Tuesday, 8th July 7.00pm - 9.00pm Bingo – Newlands CG Newlands Community Hall
Friday, 11th July 10.00am – 1.00pm – Havant Dementia Information Day. FREE event for those living with Dementia and their carers / friends / family Public Service Plaza, Havant PO9 2AX
Saturday, 12th July 10.00am Wonder gigs (family event tickets £5) The Spring, Havant
Saturday, 12th July 1.00pm – 4.00pm Repair Café – Newlands CG Newlands Community Hall
Saturday, 12th July 7.30pm Last night of The Proms (tickets £5 - £20: bookable havantorchestra.org or 03336663366) Oaklands School Concert Hall, PO7 7BW
Sunday, 13th July from 12.00pm Summer Fair FREE Entry (Disco 6pm to 9pm) Springwood Community Centre PO7 8 BJ.
Thursday, 17th July Eating Well for Less Hampshire Home Start (Havant)
Saturday, 26th July 7.00pm – 9.00pm Quiz Night – Newlands CG Newlands Community Hall
Wednesday, 30th July 12.30pm – 4.00pm Children’s Summer Arts & Crafts workshop (bookable via Dragonfly Arts Facebook) FREE Dragonfly Arts Studio, Waterlooville
Thursday, 31st July 7.30pm Old Time Sailors (tickets £25) The Spring, Havant
August Waterlooville Music Festival & Arts Festival St George’s church, Waterlooville (book at: www.waterloovillemusicfestival2025.org.uk)
Tuesday 5th & Tuesday 19th August 12.30pm – 2.30pm Carers Companionship Café Newlands Community Hall
Wednesday, 6th August 2.00pm & 7.00pm Wicked Sing-a-long (PG tickets £6.50) The Spring, Havant

Saturday, 9th August 11.30am & 2.00pm Splat! (family comedy workshop ages 3 – 6 tickets £11.50) The Spring, Havant
Saturday, 9th August 1.00pm to 4.00pm Repair Café – Newlands CG Newlands Community Hall
Tuesday, 12th August 7.00pm to 9.00pm Bingo – Newlands CG Newlands Community Hall
Thursday, 14th August 7.30pm Jive Aces (tickets £22) The Spring, Havant
Friday, 15th August 12.30pm – 4.00pm VJ80 Celebration – Newlands CG Newlands Community Hall
Saturday, 17th August [CHECK] 10.00am – 4.00pm Waterlooville Music & Arts Fest (more details here) FREE https://www.havant.gov.uk/regeneration-and-business/regeneration-havant-borough/events Waterlooville High Street
Friday, 29th August 10.30am & 1.30pm “We are going on a Bug Hunt” , delivered by HIWWT. FREE bookable: 10.30am to 12.00noon www.eventbrite.co.uk/e/family-bug-hunt-trail-and-butterfly-feeder-making-tickets-1348284718889?aff=oddttdtcreator 1.30-3.00pm www.eventbrite.co.uk/e/family-bug-hunt-trail-and-butterfly-feeder-making-tickets-1348330856889?aff=oddttdtcreator Starting Newlands Community Hall car park.
Saturday, 30th August 7.00pm – 9.00pm Quiz Night – Newlands CG Newlands Community Hall
Date TBC Southern Music Project children’s taster workshop (see their website)
Tuesday, 2nd, Tuesday 16th & Tuesday, 30th September 12.30pm – 2.30pm Carers Companionship Café Newlands Community Hall
Tuesday, 9th September 7.00pm to 9.00pm Bingo – Newlands CG Newlands Community Hall
Saturday, 13th September 1.00pm to 4.00pm Repair Café – Newlands CG Newlands Community Hall
Thursday, 18th September – 3.30pm to 6.30pm “You asked . . . We actioned” Grainger Plc Berewood Team drop-in surgery for residents Newlands Community Hall
Sunday, 19th September 1.00pm – 4.00pm Poppy making workshop Newlands Community Hall
Saturday, 20th September 1.30pm – 3.30pm TBC (see Facebook page) Litterpick - Newlands CG

Tuesday, 23rd September 7.00pm – 9.00pm Newlands Community Group Meeting (all welcome) Newlands Community Hall
Saturday, 27th September 7.00pm – 9.00pm Quiz night – Newlands CG Newlands Community Hall
Friday, 3rd October 8.00pm Abbamania (tickets £27.50) The Spring, Havant
Saturday, 11th October 1.00pm – 4.00pm Repairs Café – Newlands CG Newlands Community Hall
Tuesday, 14th & Tuesday, 28th October 12.30pm – 2.30pm Carers Companionship Café Newlands Community Hall
Tuesday, 14th October 7.00pm – 9.00pm Bingo – Newlands CG Newlands Community Hall
20th October to 11th November Remembrance Exhibition For full details please refer to our website www.portsdown-purbrook.org Christ Church, Portsdown
Saturday, 25th October 1.00pm Dragonfly Arts – Family Halloween window silhouette crafting (bookable via Dragonfly Arts) FREE Venue TBC
Saturday, 25th October 7.00pm – 9.00pm Quiz night – Newlands CG Newlands Community Hall
Saturday, 1st November Beer Festival (tickets at Denmead CC, School Ln, Denmead, Waterlooville PO7 6LU) Denmead Community Centre
Saturday, 8th November 1.00pm – 4.00pm Repairs Café – Newlands CG Newlands Community Hall
Tuesday, 11th November 10.00am – 12.00pm Remembrance Day Meeting – Newlands CG Newlands Community Hall
Tuesday 11th & Tuesday 25th November 12.30pm – 2.30pm Carers Companionship Café Newlands Community Hall
Tuesday, 11th November 7.00pm – 9.00pm Bingo – Newlands CG Newlands Community Hall
Tuesday, 18th November 6.00pm – 8.00pm Deco Mesh Wreath Making workshop – Newlands CG Wellington Vale Care Home
Saturday, 29th November 7.00pm – 9.00pm Quiz Night – Newlands CG Newlands Community Hall
Every Thursday 10.00am – 11.45am Parent Support Group (Havant) FREE (info@hshants.org.uk) Sharps Copse Children’s and Family Centre, Prospect Ln, Havant PO9 5PE

Berewood supply chain partners give back

A TEAM FROM AXIS

The repairs and maintenance contractor for Grainger Trust properties, gave up a day to deliver an Estate Day clean up.

Over thirty families utilised the skip dropping off unwanted items. Berewood primary school were also able to drop off broken sports equipment as well as repurposing some matting that was being donated. Axis provided the skip for the day and three vans with operatives who were able to complete small tasks on the day for Grainger Trust residents. The feedback was great so we'll look to organise another for next Spring.



A TEAM FROM GRAINGER AND MORGAN SINDALL

The main contractor for the second primary school delivered two site tours to local students from Cowplain School and Berewood Primary.

Morgan Sindall and Grainger Plc match funded £500+ of construction materials for students on a SERT facilitated construction programme. On Friday, 9th May the Grainger team and Susan Dee from Morgan Sindall were invited to Cowplain School.

We celebrated today 9 students completing a SERT course delivered at Cowplain School. These students have spent the year learning about electrical circuits and are all now going onto trades courses at college. It's been fantastic to collaborate with the Grainger team and Morgan Sindall who arranged a really valuable site visit to the Berewood development and also kindly funded £500+ worth of necessary equipment to help with their learning

Mark Edwards, CEO, SERT



Ian Gates, Principal, Cowplain School "We've had a fantastic morning today, presenting certificates to our students who have worked with SERT over the last academic year, they've done brilliantly."

NEW JOBS CREATED

Paul Basham Associates have created two new job roles which they have actively been recruiting for in the local area, visiting the local colleges to share information about both apprenticeship opportunities.



FUNDED AIR SOURCE HEAT PUMP TRAINING

Available for May and June: Spaces Are Limited!

What you need to know:

- Based in Hampshire
- Approved by Cert-ain & OFTEC
- Multiple funding options available

[Get Started](#)

Don't miss you chance to stay ahead in the industry

Call us on: 01489 232090

This course is available for experienced plumbers, electricians, HVAC and gas engineers

Your local community groups

Find out more, please visit:

Newlands Community Group
www.newlandscommunitygroup.com

Waterlooville Community Centre
www.waterloovillecommunity.org.uk

Clanfield Centre
www.clanfieldcentre.co.uk

The Spring Arts & Heritage Centre | Havant, Hampshire
www.thespring.co.uk

Community First
www.cfirsr.org.uk

Havant Orchestra
publicity.havantorchestras@gmail.com

Citizens Advice Havant:
www.citizensadvicehavant.org

Waterlooville Library
www.hants.gov.uk/librariesandarchives/library/libraryfinder/waterlooville-library

Hampshire Home Start (Havant)
info@hshants.org.uk,

Sharps Copse Children's and Family Centre
Prospect Ln, Havant PO9 5PE

What's on in Havant Borough
www.facebook.com/HavantBorough



JOIN US FOR A Family Fun Day!

FREE ENTRY

11AM-3PM

SATURDAY 14TH JUNE

STALLS
GAMES
ICE-CREAM
ENTERTAINMENT
AND MUCH MORE!

ALL PROCEEDS TO GO TO THE CENTRE

21 Bedhampton Road, Bedhampton, PO9 3ES
Call: 023 9248 0654
Email: office@bedhamptoncommunity.org
www.bedhamptoncommunity.org



BEER FESTIVAL

SATURDAY 1ST NOVEMBER

ALES, CIDER, WINE, BBQ, LIVE MUSIC & RAFFLE



BEER - FOOD - LIVE MUSIC

BUY YOUR TICKETS AT DCC, PARKERS OR FOREST OF BERE

02392 256132 SCHOOL LANE, DENMEAD. PO7 6LU INFO@DENMEADCC.UK



Proms in the Park

SATURDAY 5TH JULY 5PM

An evening of musical entertainment

BBQ, Bar & Ice Cream available

Tickets will be on sale at DCC, also at Parkers!



Good Money Habits for Every Home

Healthy Money Habits – For Today, Tomorrow & Beyond

Whether you own your home or rent, getting into good money habits is one of the most empowering things you can do. Saving isn't just for the wealthy – it's for everyone, and the small things you do today can have a big impact on your future.

Just like we stock our kitchen with food for now, next week, and longer-term meals in the freezer, we can take the same approach with our finances.

Let's look at the Kitchen Cupboard Analogy, which I find to be a very useful way to help my clients think about their priorities.

Cupboard = Short-Term Savings

Your "ready-to-use" cash. Money for everyday costs and surprises—like a broken boiler or a school trip.

Top Tip Keep this in an easy-access savings account.

Fridge = Medium-Term Goals

Think of this as money for a car, holiday, or big bills that come around yearly.

Top Tip A regular savings account or a **Cash ISA** can help you grow this without paying tax on interest.

Freezer = Long-Term Savings & Pension

This is where you put money away for a later date—like retirement or helping the kids in 10+ years.

Top Tip Any savings you make into your pension, Stocks & Shares Isa, Lifetime Isa and Junior Isa

No matter your income, these habits help create security and build confidence. It is a great feeling to have to know that you have a fund there for emergencies, regular use or to achieve those long-term goals. So, what can you do:

START SMALL – BUT START TODAY

£5 a week can turn into hundreds over time. The key is being consistent. Sometimes just setting up a standing order into another account helps as its automatic. Little and often can go far.

USE YOUR TAX-FREE ALLOWANCES

You can save up to £20,000 a year in an ISA, and £9,000 per child in a JISA– tax-free! Check what you're entitled to.

KNOW WHERE YOUR PENSION IS

Keep track, understand the pension you have and how your pension works. Pensions are key to future retirement plans.

By speaking to a financial adviser you can make sure your pension is growing as it should and in line with your attitude to risk, capacity for loss and goals.

GET ADVICE YOU TRUST

Just like you'd go to a GP for health, you can go to a financial adviser for your money.

Regular check-ins lead to better peace of mind. An adviser can keep you up to date with the ever-changing financial environment and legislation and helps you plan for your financial goals.

PLAN TOGETHER

Couples and families who talk about money and plan together often make better decisions and reduce stress. Not only is it about looking after the future generation but also taking care of our elderly generation. Protection and financial security are important at all stages of life.

Laura North
Associate Partner
Laura North Financial Planning

Laura North
Financial Planning

E laura.north@sjpp.co.uk
www.lauranorthfinancialplanning.co.uk

Holidays activity sheet

Retro crafting for a holiday rainy day project.

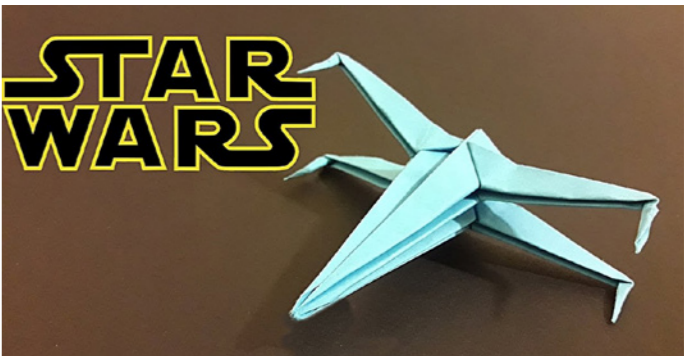
Origami is the Japanese art of folding paper. Here are a few projects you might want to try whether you want to create a simple fortune teller or challenge yourself with the Star Wars X Wing! Typically Origami projects require 15cm x 15 cm square piece of coloured paper. When you've completed the project we'd love to share them on our website, email the photograph to berewood@graingerplc.co.uk

FORTUNE TELLER



Fortune teller origami instructions

STAR WARS X WING



Star Wars X-wing origami instructions

ORIGAMI FOR KIDS; JUMPING FROGS, BUTTERFLIES OR DOGS



Jumping frogs, butterflies or dogs origami instructions

Advertise in Berewood News

Share your business, charity or event with residents for free!

If you would like to advertise your community group / charity or a public event in a future issue of Berewood News please contact us at: berewood@graingerplc.co.uk

There is no charge, however we reserve the right to choose what to share.



GrowingPlaces

COMMUNITY PANTRY

Helping you to save money, reduce waste and join a community. Everyone is welcome!

£5 BUYS A £20 SHOP

We collect donated food from a number of retailers and fundraise to purchase food to fill the pantry.

MILL HILL WATERLOOVILLE OPENING TIMES

Monday and Thursday morning (not bank holidays) 9am - 10am
Thursday (6:30pm - 7:30pm) & Saturday (10am - midday)

Community at GrowingPlaces

The Meadow Building, Growing Places Mill Hill, Waterloooville, PO7 7DB
07770806533 / community@growingplaces.org.uk

Got a question?

Contact us

For all site queries:
berewood@graingerplc.co.uk

To rent with Grainger at Berewood:
berewoodprs@graingerplc.co.uk

To find out more about the development:
www.berewoodhampshire.co.uk



A development by

grainger plc